

# ESTATE & REAL ESTATE AUCTION

Tuesday, September 29, 2020

Starts @ 9:31 am

For More Pictures & Info: [www.chuppsauction.com](http://www.chuppsauction.com)

LOTS MORE ITEMS  
ON OTHER SIDE

Address: 18868 New Prue Rd. • Osage, OK, 74054

Directions: From HWY 412 and exit #209/New Prue Rd/South 209 W. Ave., take New Prue Rd (North) approx. 19 miles, turn right (east) follow lane to property. From junction of Hwy 99 & New Prue Rd. (between Cleveland & Hominy) take New Prue Rd east approx. 5 miles to auction property on left of road. Watch for auction signs. Lots of pasture parking!

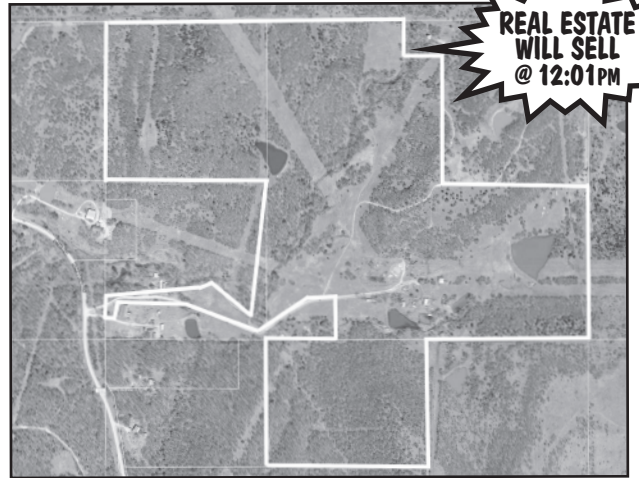
## 192 ACRES in OSAGE COUNTY!

192.95 Acres +/- with 1997 3 bed, 2 bath, 1680 sq. ft. doublewide, storm cellar, 1 bedroom guest house, 20x40 Shop and 40x40 Barn and corral. Land is 50% wooded, 50% pasture/hay meadow, is fenced and cross fenced, has 3 ponds which don't go dry and Vandruff Creek runs through the property. Lots of wildlife including turkey, deer & quail and there are several deer plots w/ permanent blind. Sells Absolute!

OPEN HOUSES: Sept. 15th & Sept. 21st from 4 - 6 pm  
TUESDAY MONDAY REAL ESTATE ONLY

TERMS: 5% down day of sale, min. \$5,000, non-refundable, no contingencies, close in 30 days.  
7% Buyers Premium. See [www.chuppsauction.com](http://www.chuppsauction.com) for complete terms and conditions.

DALE & MARIA CHUPP Coldwell Banker Neokla Select (918) 630-0495



## TRACK LOADER, BACK HOE, GRADER, VEHICLES, TRUCKS, BUGGIES, TRAILERS, PIPE, TACK, FARM IMPLEMENTS, TONS OF SCRAP IRON, WESTERN HOUSEHOLD FURNITURE, ANTIQUES & COLLECTIBLES & MUCH MORE!!

◆◆◆ ON SITE & ONLINE BIDDING STARTS AT 12:37 PM ON LOTS 1-37 ◆◆◆

- |  |   |  |  |
|--|---|--|--|
| 1 STIHL HT 101 Long chain saw                | 13 2004 Ford F-150 XLT 5.4 Triton 4x4 "AS IS" | 21 Wood box wagon w/ rubber tires          | 31 King size western style bed w/ mattress |
| 2 STIHL 066 Chain saw "AS IS"                | 14 Caterpillar track loader 977L w/ 8' bucket | 10.5'x5.5'                                 | & box springs hand made in Mexico w/       |
| 3 STIHL BR 800 X Magnum blower               | runs  | 22 Shipping container 40'                  | copper inlay                               |
| 4 Huffly Excess Big tire hard nose bicycle   | 15 Backhoe 580 E w/ pallet forks & bucket     | 23 Metal Knight statue old 7' tall         | 32 Western style dresser w/ drawers hand   |
| 5 Case 930, dual hydraulics tractor, runs    | for front & 2 rear buckets                    | 24 Blacksmithing smoker 4.5'x32"           | made in Mexico w/ copper inlay             |
| SN: 8225097                                  | 16 Galion Grade-O-Matic T500 Series A         | 25 Custom made Leather chairs w/           | 33 Western style dresser w/ drawers hand   |
| 6 Batwing Terrain King Brush Hog             | road grader needs injection pump              | cow hide backs                             | made in Mexico w/ copper inlay             |
| 7 Boat w/ Mercury 850 motor, 17'6 person     | 17 Fordson Ironwheel tractor doesn't run -    | 26 High end leather couch w/               | 34 Western style nightstands hand made in  |
| 8 Sand H cattle trailer 24'Lx7'T             | parts only                                    | hide-a-bed 7'                              | Mexico w/ copper inlay                     |
| 9 Bumper pull trailer 2 axle 12'x6.6'        | 18 Gardner-Denver Electric screw comm'l       | 27 High end leather chairs                 | 35 Wooden ice box old                      |
| 10 Bumper pull belshoe equipment trailer 15' | air compressor shows 30.028 hours             | 28 Metal bar stools                        | 36 2 Granade Red Comet Liquid fire         |
| 11 Multiquip pull type concrete mixer w/     | 19 Quincy QT-10 comm'l air compressor         | 29 Custom made bar w/ granite top 6.5'x42" | extinguisher old red                       |
| Honda gas motor                              | 20 Surrey 3 seat buggy needs restored         | 30 Sanyo flatscreen TV 60"                 | 37 Hitachi 12" slide compound miter saw    |
| 12 2003 Ford F-150 XL Standard sport 4x4     |   |  | w/ stand                                   |
| 177k w/ winch                                |   |  |  |

ESTATE OF:  
**WES & SUSIE WEAVER**

LOTS MORE ITEMS  
ON OTHER SIDE

LOTS MORE ITEMS  
ON OTHER SIDE

**Auctioneer's Note:** Due to the death of Wesley and Susan, the Weaver estate is liquidating assets. We will be running 2-3 auction rings all day. Online bidding starts @ 12:37 pm. MOST VEHICLES WILL HAVE TITLES. A loader will be available day of and day after auction from 9 am to 4 pm. Don't overlook this auction there is tons of scrap iron and lots of items not listed but a must see! Follow us on Facebook for updates or for pictures and more info. [www.chuppsauction.com](http://www.chuppsauction.com).

NOT RESPONSIBLE FOR ACCIDENTS. ANY ANNOUNCEMENTS DAY OF SALE SUPERSEDES PREVIOUS ADVERTISING.

# CHUPPS AUCTION & REAL ESTATE

Stan Chupp  
(918) 638-1157

Dale Chupp, Realtor  
Coldwell Banker Neokla Select  
(918) 630-0495

E. J. Chupp

# ESTATE & REAL ESTATE AUCTION

Tuesday, September 29, 2020

Starts @ 9:31 am

For More Pictures & Info: [www.chuppsauction.com](http://www.chuppsauction.com)

LOTS MORE ITEMS  
ON OTHER SIDE

Address: 18868 New Prue Rd. • Osage, OK, 74054

Directions: From HWY 412 and exit #209/New Prue Rd/South 209 W. Ave., take New Prue Rd (North) approx. 19 miles, turn right (east) follow lane to property. From junction of Hwy 99 & New Prue Rd. (between Cleveland & Hominy) take New Prue Rd east approx. 5 miles to auction property on left of road. Watch for auction signs. Lots of pasture parking!

## TRACK LOADER, BACKHOE, GRADER, VEHICLES, TRUCKS, BUGGIES, TRAILERS, PIPE, TACK, FARM IMPLEMENTS, TONS OF SCRAP IRON, WESTERN HOUSEHOLD FURNITURE, ANTIQUES & COLLECTIBLES & MUCH MORE!!

◆◆◆ ON SITE & ONLINE BIDDING STARTS AT 12:37 PM ON LOTS 1-37



- Ford LTD parts only
- Ford Explorer XLT parts only
- Ford F-250 diesel parts only
- 1959 Ford truck frame & body only parts only
- Ford Ranger F-150 parts only
- 1966? Ford 100 custom cab twin beam
- 6 Ford F-150's parts only
- Ford super duty custom w/ 12' bed no motor
- Ford super duty boom truck w/ Tulsa body bed
- Ford-100 4x4 parts only
- Ford F-350 flatbed parts only
- Ford F-350 w/ 9' enclosed bed
- Ford Boom truck parts only
- Chevy Boom truck parts only
- 7 Mercedes 300 SD's parts only
- Mercedes 450 SK 2 door car parts only
- 1979 International Transtar 4300 truck 350 cummins motor w/ Hendricks suspension runs but doesn't drive
- 1969 International Fleetstar dump truck w/ 14' bed
- John Deere tractor 4x4 w/ loader parts only
- 2 Daihatsu Rockys parts only
- Kountry Aire 5th wheel camper "AS IS"
- V Bottom boat on trailer 14'
- 13' Air Boat on trailer "AS IS"
- Bobcat Clark 310 Skid steer parts only
- Bobcat 751 Skid steer parts only
- Enclosed box bed
- HY-HOE 380 parts only
- Kubota HST G1800 diesel mower "AS IS"
- Parts for ME245 tractor
- Lots of tires & wheels for tractors & trailers
- Running gears for buggy
- Buggy shafts ● Iron wheels
- Lots of motors various sizes
- Lots & lots of scrap metal
- Air compressors diff sizes some commercial
- Commercial power washer on trailer "AS IS"
- Cement mixer, old
- Mile marker winch
- Honda Fourtrax 125 4-wheeler "AS IS"
- Rheem furnace "AS IS"
- Rheem air unit "AS IS"
- Yard tools ● Metal clamps
- Chains, pulleys, gauges various assortment
- 6 in Bench grinder "AS IS"
- The Hotsy Corporation sand blaster
- Misc. oils & gas ● Power tools
- Cement equipment, floats
- Lots of chain saws "AS IS"
- Cut off saw ● Bolt cutters
- Buffalo heavy duty grinder on steel stand
- Lots of copper tubing, wire, pipe etc.
- Grinder on steel stand "AS IS"
- Peterbilt air filters for semi
- Honda 350 motorcycle "AS IS"
- Bowflex xtreme exercise machine
- Bowflex tread climber TC3000
- Cast iron wood stove (front glass is broken)
- Shop lights ● Dolly
- Buckets (plastic) ● Heavy duty sockets
- Metal cabinet and shelving
- Car & truck parts ● Gear puller
- Wrenches ● Ingersol 3/4 impact
- Lots of copper radiators
- Aluminum patio chairs
- 2 1/2 Army truck wheels
- Sanborn air compressor
- Airless tank sprayer
- Oxygen bottles ● Car dashes (old)
- Propane bottles ● Lots of pipe stands
- Propane ran burner for outside cooking w/ large propane tank
- Single standing locker
- Large extension ladder
- Deer cart ● Deer stands
- Lots of scrap batteries
- Track hoe parts, hydraulic cylinders, pumps etc.
- Mercedes 5 cylinder engine (for parts)
- Metal wood stove w/ glass front
- Chain link fencing approx. 30 rolls of 6' heavy duty
- Fencing posts
- Wire cattle panels approx. 20
- Bird netting 3 rolls
- Fencing connector's large animal cages - various sizes
- Lots of metal pipe ● Pipe racks
- Sucker rod approx. 500 pcs
- Joints of 2 3/8" & 2 7/8" pipe approx. 300pcs
- Metal trusses approx. 35' long
- Mercury 50hp boat motor
- 3pt Rotary hoe 7' ● 3pt 2 Bottom plow
- 3pt Post hold digger ● 3pt Seeder
- 3pt Angle blade 7' ● 2) 3pt Disc 6'
- 3pt Tiller 5' ● 3pt Chisel
- 2pt 2 bottom plow ● 2pt Sickle mower
- Lots of 3pt Brush hogs various sizes
- Tongue & groove logs for a cabin several hundred pcs, has been uncovered for an extended period of time
- 2 Finish mowers
- Iron wheel rake ● Old barn tin
- American Road Machinery Co. grader old
- Russel Grader Manufacturing Co. grader old
- Pull type grader w/ 10' blade
- Iron wheel Case sickle mower old
- Iron wheel plow old
- Cultivator old
- Iron wheel corn picker "AS IS"
- Iron wheel single plow old
- Several motors various sizes and makes
- Tack, harnesses for draft and standard horses, Australian saddles, saddles, bridles, halters, lead ropes
- Fuel tanks various sizes
- Large metal storage tanks
- Aluminum semi-truck headache rack
- Large army winch off of a 5 ton truck
- Flatbed trailers, lots of various sizes
- Live bottom feed trailer 30' "AS IS"
- Mud pump w/ CAT diesel motor
- 13' dump bed
- Several Dune Buggies parts only
- 5 Large animal cage panels 6.5'x16'
- 3" water pump w/ Honda motor
- Sheet metal saw
- Oil jack w/ motor
- Old doors ● Milk cans
- Kitchen table w/ 2 matching chairs
- Fire place insert
- Whirlpool electric stove
- Kenmore dishwasher
- Ceramic tile flooring
- Dinner bell 14" ● Western lamps
- Wild fire drip can ● Western décor
- Western book shelf ● Lots of DVD's
- Gazebo new in box
- 4 Saddle purses
- 4 Cast iron horse heads old
- Large knife hand made
- Tekc custom knife
- Indian & Western décor
- Several firefighting coats
- GI Joe Barbie
- Dennis Kirk wildlife call
- Hunting boots ● Duck calls
- Lots of hunting clothes sz med-xl
- Sanyo TV 55"
- Grow tent 45"x45"x79"
- 5 Motorola 2 way radios
- Grizzly bear hide from Alaska
- Mounted Gar fish
- Kitchen Aid mixer
- Many more items to be added

MORE INFORMATION  
ON OTHER SIDE

ESTATE OF:  
**WES & SUSIE WEAVER**

MORE INFORMATION  
ON OTHER SIDE

NOT RESPONSIBLE FOR ACCIDENTS. ANY ANNOUNCEMENTS DAY OF SALE SUPERSEDES PREVIOUS ADVERTISING.

## CHUPPS AUCTION & REAL ESTATE

Stan Chupp  
(918) 638-1157

Dale Chupp, Realtor  
Coldwell Banker Neokla Select  
(918) 630-0495

E. J. Chupp