

# Real Estate and Public Auction

Thursday, June 18, 2026

Starts @ 9:01 am

For more information and pics: [www.chuppsauction.com](http://www.chuppsauction.com)



DIRECTIONS: Take Hwy 75 south of Glenpool approx. 5 mi to 181st St S. Turn W. Go 1/8 mi. Auction on Left. Pasture Parking.

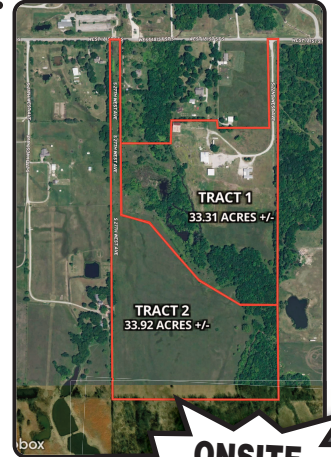
Real Estate  
WILL SELL  
@ 12:01 PM

## 67± ACRES OFFERED IN 2 TRACTS

**Tract 1:** 33.13 Acres featuring a beautifully transformed historic schoolhouse offering 3,993 sq ft of unique living space! This one-of-a-kind property includes 2 bedrooms, 2 full baths, and 2 half baths, along with a large butler's pantry and 3 spacious living areas perfect for an office, entertaining or relaxing. Improvements include a carport, impressive 50x50 red iron shop with 14x12 OH, plus 2 additional outbuildings for storage, hobbies or livestock. A second septic available for future building. The fenced acreage offers a scenic mix of pasture, creek, and ponds, creating the ideal country setting with endless possibilities.

**Tract 2:** 33.92 beautiful acres featuring hay meadow, scenic creek, and multiple outstanding building sites. A perfect blend of open pasture and natural beauty with endless potential for your dream home, ranch, or recreational getaway.

TERMS: 10% down day of sale, min. \$10,000 per property, non refundable. No buyer contingencies, close in 30 days. 5% Buyers Premium, Absolute Auction, No Reserve!



**OPEN HOUSES: MONDAY - JUNE 1<sup>st</sup> & 8<sup>th</sup> from 4 - 6 pm**  
Bring your ATVs to explore the land.

- THE CHUPP TEAM -  
DALE - MARIA - JUSTIN

Coldwell Banker Select

(918) 630-0495  
(918) 640-5024

ONSITE  
and ONLINE  
BIDDING!

We Will Be  
RUNNING  
2 RINGS  
ALL DAY!

**Guns & Ammo - Shipping Containers - Propane Tank  
Skid Steer - Tractor - Pickup - Trailers - Forklift  
Mowers - Sprayers - Lumber - Fencing Supplies  
Household Furniture - TV's - Appliances - Multifunction Office Printers  
Office Furniture - Exercise Equipment - Collectibles and MORE!**

**\*\* AUCTION STARTS @ 9:01 AM \* REAL ESTATE WILL SELL @ 12:01PM \* LOTS 2 - 66 START @ 10:17 AM \*\***

- Guns
- Ammo
- BB Guns
- Pallet Jack
- Cutting Torch
- Generator
- LP Heaters
- Lots of Hand Tools
- Wrenches
- Sockets
- Screw Drivers
- Craftsman Shop Vac
- Elec Tools
- Oils
- Herbicides
- Chain Saws
- Air Compressors
- Metal Shelving
- Cedar Boards
- Assorted Lumber
- Concrete Blocks
- Stepping Stones
- Railroad Ties
- T-Posts
- Wire Cattle Panels
- Gates
- Tires & Wheels
- 2 Tons Finely Ground Limestone
- Wood Cabinets
- Gold Carnival Glass Punch Bowl Set
- Carnival Glass
- Pink Depression Glass
- Rooster Themed Dinnerware
- Cobalt Blue Glassware
- Seasonal Décor
- Lots of Home Décor
- Framed Wall Mirrors
- Wall Art
- Coca Cola Collection
- Small Kitchen Appliances
- Folding Chairs
- Office Chairs
- Glider Rocker
- Office Furniture
- Office Supplies

LOTS MORE ITEMS  
ON OTHER SIDE

**OWNERS: DAVID & JUDY SIVADON**

LOTS MORE ITEMS  
ON OTHER SIDE

TERMS: Cash - Credit Cards - Check with Proper ID - OK Sales Tax Applies unless exemption is shown.  
NOT RESPONSIBLE FOR ACCIDENTS. ANY ANNOUNCEMENTS DAY OF SALE SUPERSEDES PREVIOUS ADVERTISING.

## CHUPPS AUCTION & REAL ESTATE

Stan Chupp  
(918) 638-1157

Dale Chupp, Realtor  
Coldwell Banker Select  
(918) 630-0495

Jonathan Miller  
(918) 237-7582

# Real Estate and Public Auction

Thursday, June 18, 2026

Starts @ 9:01 am



ADDRESS: 2106 W 181st St S. • Mounds, OK 74047

DIRECTIONS: Take Hwy 75 south of Glenpool approx. 5 mi to 181st St S. Turn W. Go 1/8 mi. Auction on Left. Pasture Parking.

**LOTS MORE ITEMS  
ON OTHER SIDE**

**We Will Be  
RUNNING  
2 RINGS  
ALL DAY!**

**Guns & Ammo - Shipping Containers - Propane Tank  
Pickup - Trailers - Forklift - Skid Steer - Tractor  
Mowers - Sprayers - Lumber - Fencing Supplies  
Household Furniture - TV's - Appliances - Multifunction Office Printers  
Office Furniture - Exercise Equipment - Collectibles and MORE!**

**\*\* AUCTION STARTS @ 9:01 AM \* REAL ESTATE WILL SELL @ 12:01PM \* LOTS 2 - 66 START @ 10:17 AM \*\***

- 2 Sears & Roebuck Single Shot 410
- 3 Harrison & Richardson Topper Model 88 410
- 4 Remington Model 550-1 22 Gauge Short/Long
- 5 Remington Model 514 22 Gauge Short/Long
- 6 Mossburg Model 500A 12 Gauge
- 7 Axis 500 Side by Side - 4x4 - Dump Bed
- 8 High Cube Shipping Container
- 9 High Cube Shipping Container
- 10 500-Gal Propane Tank w/Filler Hose
- 11 2013 Ford F150 XLT Eco Boost - 4x4
- 12 Bumper Pull 2-Axle Trailer w/Ramps
- 13 Yale 2-Stage LP Propane Forklift w/Side Shift
- 14 Bobcat S175 Skid Steer - Hand or Foot Control
- 15 6ft Bucket for Skid Steer
- 16 John Deere 5103 Tractor - Diesel - 540 PTO
- 17 John Deere RC6M 3-Point 6ft Brush Cutter
- 18 Frontier GM1084 3-Point 7ft Grooming Mower
- 19 Snyder 3-Point 150-Gal Sprayer w/Rooster Tail
- 20 United 3-Point 6ft Box Blade w/Ripper Teeth
- 21 6ft 3-Point Angle Blade
- 22 2-Point Hay Carrier
- 23 Fuel Tank approx 500 Gal

- 24 McCormick Farmall H Tractor - Tricycle Front
- 25 Covered Platform State w/ Steps & Benches
- 26 Sentry Safe on Wheels - Dial
- 27 Cloth Upholstered Reclining Chair
- 28 Cloth Upholstered Rocker-Recliner
- 29 Microfiber Couch w/Hide Away Bed
- 30 3-Pc Glass Topped Coffee & End Tables
- 31 Pioneer Stereo System in Cabinet w/ Speakers
- 32 Sohmer & CO Piano w/Bench
- 33 King Bed - Mattress Box Spring Headboard
- 34 Rustic Table
- 35 Chair & Ottoman
- 36 Chair & Ottoman
- 37 Coat/Storage Cubby Unit
- 38 Coat/Storage Cubby Unit
- 39 Samsung Flat Screen 55" TV w/ Surround Sound
- 40 Rolling Stainless Steel Table
- 41 Kenmore High Efficiency Top Load Washer
- 42 Kenmore Elec Dryer
- 43 Vintage Dresser
- 44 Custom by Ashley 2-Pc Glass Fronted Hutch

- 45 Ashley Side Table/Desk
- 46 Pair Ashley End Tables w/ Glass Top
- 47 Ashley Coffee Table
- 48 Armoire
- 49 Rolling Rubbermaid Cart
- 50 Loveseat 5ft
- 51 Kitchen Aid Side by Side Refrigerator/Freezer
- 52 Lighted Cabinet w/Glass Shelves
- 53 Round Kitchen Table w/ 4 Chairs
- 54 Mayo Cloth Upholstered Couch
- 55 Kenmore Side by Side Refrig/Freezer w/ Ice
- 56 Stainless Steel Food Prep Table
- 57 Proform 395E Ext Stride 18" Elliptical
- 58 Proform Whirlwind Exercise Bike/Arms
- 59 Century Versys Kickboxing Bag
- 60 Emerson LED TV Flat Screen
- 61 Leather Rocking Recliner
- 62 Leather Rocking Recliner
- 63 Lanier 5622 Super G3 Multifunction Printer
- 64 Kyocera EcoSys M3550IDN Multifunction Printer
- 65 Insignia 40" TV w/ Polk Sound Bar
- 66 Historic Waiting Room Doors

**FOR MORE INFO & PICS**  
**[www.chuppsauction.com](http://www.chuppsauction.com)**

**LOTS MORE ITEMS  
ON OTHER SIDE**

**LOTS MORE ITEMS  
ON OTHER SIDE**

**Auctioneer's Note:** Due to health reasons David & Judy are selling all their equipment and household items. **This is a GREAT OPPORTUNITY—YOU WON'T WANT TO MISS IT!** Follow us on Facebook for updates or visit our website for pictures at **[www.chuppsauction.com](http://www.chuppsauction.com)**

**TERMS: Cash – Credit Cards – Check with Proper ID – OK Sales Tax Applies unless exemption is shown. NOT RESPONSIBLE FOR ACCIDENTS. ANY ANNOUNCEMENTS DAY OF SALE SUPERSEDES PREVIOUS ADVERTISING.**

## CHUPPS AUCTION & REAL ESTATE

**Stan Chupp**  
**(918) 638-1157**

**Dale Chupp, Realtor**  
**Coldwell Banker Select**  
**(918) 630-0495**

**Jonathan Miller**  
**(918) 237-7582**